

ELECTRICAL

Wire Size:

- Solder Cup Type. One #20 AWG
- Eyelet Type. Two #20 AWG or
Three #22 AWG

Current Rating. 3 Amperes

Withstanding Voltage:

- Contact to Contact Sea Level. 2700 VRMS Minimum
- Contact to Ground Sea Level. 2700 VRMS Minimum
- Contact to Contact 70,000 Ft.560 VRMS Minimum
- Contact to Ground 70,000 Ft.560 VRMS Minimum

MECHANICAL

- Creepage Between Contacts. 0.16 Minimum
- Air Space Between Contacts. 0.11 Minimum
- Contacts to Accept 0.030 ± 0.001 DIA. Pins

Contacts:

- Spring Temper Grade "A" Phosphor Bronze, or
Heat Treated Beryllium Copper
- Gold Plated over Copper or Nickel Plate

Mounting Hardware:

- Special Stud, Screws, Lockwashers, and Nuts

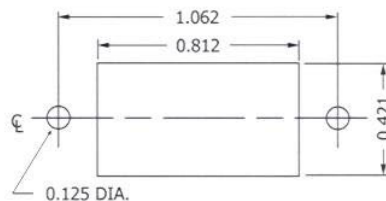
Insulation Material:

- Choice of "MIL Approved" Thermosetting
Insulations (See Page 45)

Temperature Ratings: -65°C to +125°C

Weight of Socket with Mountings: 0.26 oz.

		CHASSIS MOUNTING DATA		
		CONTACT DATA	CHASSIS THICKNESS	
OPEN ENTRY	SOLDER CUP $\frac{3}{16}$	$\frac{1}{16} - \frac{1}{8}$	HRCD-2	
		$\frac{1}{16}$		HRCD-22
	EYELET $\frac{1}{4}$	$\frac{1}{16} - \frac{1}{8}$	HRCD-6	
		$\frac{1}{16}$		HRCD-26
	STRAIGHT $\frac{3}{16}$	$\frac{1}{16} - \frac{1}{8}$	HRCD-24	
		$\frac{1}{16}$		HRCD-4
CLOSED ENTRY	SOLDER CUP $\frac{7}{32}$	$\frac{1}{16} - \frac{1}{8}$	HRCD-2K	
		$\frac{1}{16}$		HRCD-22K
	EYELET $\frac{1}{4}$	$\frac{1}{16} - \frac{1}{8}$	HRCD-6K	
		$\frac{1}{16}$		HRCD-26K
	STRAIGHT $\frac{1}{8}$	$\frac{1}{16}$	HRCD-24K	HRCD-4K



RECOMMENDED CHASSIS CUT-OUT