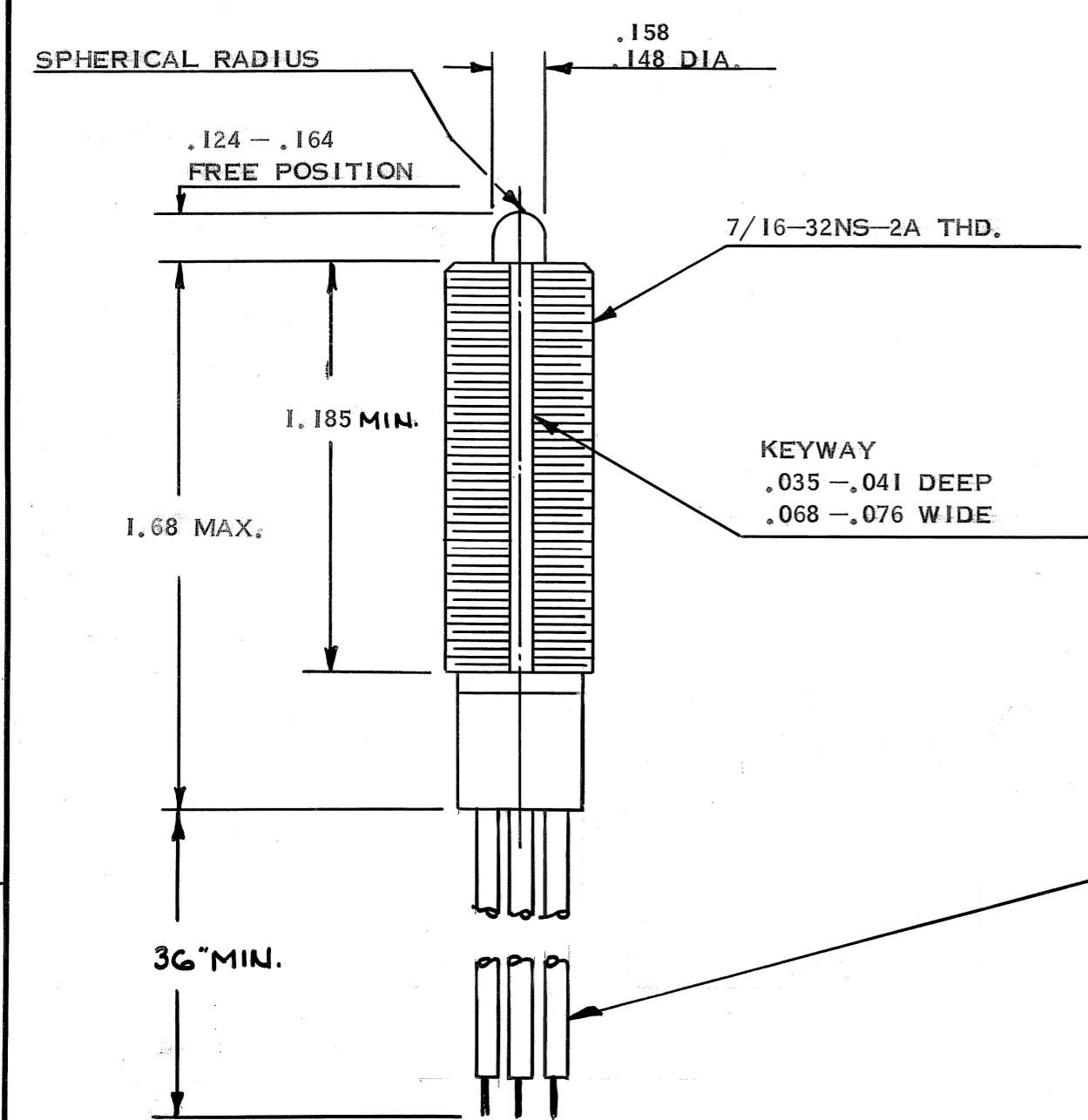
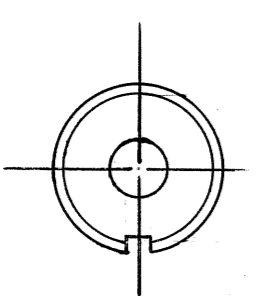


Property of
Sensata Technologies





AWG#20 WIRE LEADS
PER BMS 13-31 TYPE I, CLASS I
CODED COM., N.C., N.O.

REVISIONS				
ZONE	LTR	DESCRIPTION	DATE	APPROVED
	-	1ST. ISS.	2-23-66	R.P./CWB
	A	ADDED TOP VIEW, ADDED MILITARY CALLOUT TO MTS. HARDWARE, ADDED CHAR. #11 CHANGED WIRE CALLOUT WAS PER MIL-W-5086 TYPE1	3-28-66	RP/CWB
C-1	B	MOVEMENT DIFF. WAS .010 MAX.	4-7-66	RP/CWB
C-5	C	ADDED 1.185 DIA.	4-22-66	RP/CWB
B-5	D	1.35 MIN WAS 1.185, 1.87 MAX WAS 1.68 MAX	5-31-66	RP/CWB
B-5	E	1.185 WAS 1.35 MIN, 1.68 MAX WAS 1.87 MAX	6-29-66	RP/CWB
	F	MOVEMENT DIFF WAS .007 MAX, LIFE WAS 25,000 ~ CURRENT RATING WAS 7 AMPS, RESISTIVE CHG'D LEAD DIRECTION	10-26-66	RP/CWB
D-4 C-5	G	CORRECTED TOP VIEW 1.185 MIN WAS 1.185 ± .002	3-23-67	RP

CHARACTERISTICS-

- ACTUATION FORCE 30 OZ. MAX.
- RELEASE FORCE 4 OZ. MIN. AT STP
- PRETRAVEL .015 MAX.
- MOVEMENT DIFFERENTIAL .010 MAX.
- OVERTRAVEL .125 MIN.
- LIFE AT RATED LOAD 40,000 CYCLES
- AMBIENT TEMPERATURE RANGE -85°F TO +275°F
- CURRENT RATING AT 28 VOLTS D.C. 4 AMPS, RESISTIVE
- BASIC SWITCH, (CLASS A, HERMETICALLY SEALED) 10AT51-1
- MOUNTING HARDWARE:
 - HEX NUT (2) 9/16 HEX, .093 THICK, ST. ST. 3 LOCKWIRE HOLE
 - LOCKWASHER (1) AN936A716
 - KEY WASHER (1) MS25081 EXCEPT .445 I.D., .032 THK.
- MATERIAL BODY (THREADED, 303 ST. ST.)
PLUNGER, 303 ST. ST.

UNLESS OTHERWISE SPECIFIED DIMENSIONS ARE IN INCHES	BY	R. PUCCINI	DATE	2-23-66	 METALS & CONTROLS INC. ATTLEBORO, MASSACHUSETTS, U.S.A. A CORPORATE DIVISION OF TEXAS INSTRUMENTS INCORPORATED	 KLIXON CONTROL PRODUCTS GROUP
	TOLERANCE ON FRACTIONS DECIMALS ANGLES	CH.				
MATERIAL	ENG.				10AT54-1 S.P.D.T. PLUNGER SWITCH ENVELOPE DRAWING	
	APPROVED	<i>CWB</i>	DATE	2-23-66	SIZE	B
					CODE IDENT NO.	82647
						10AT54-1
					SCALE	
						SHEET