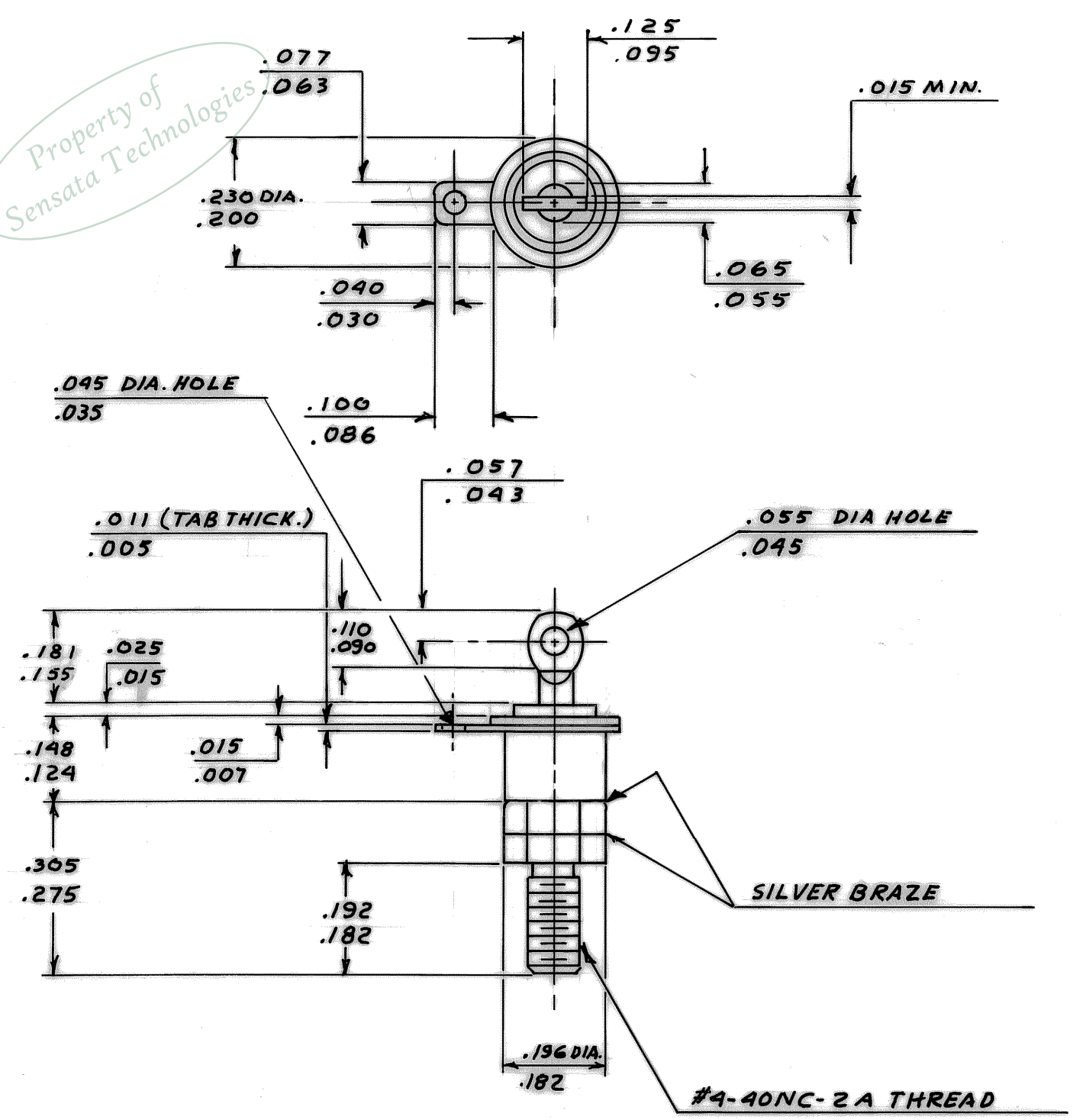


Property of
Sensata Technologies



NOTE:
1.) TERMINAL FLAT MAY BE AT RANDOM ANGLE WITH CUP TAB CENTERLINE.
2.) MAXIMUM TORQUE APPLIED TO DEVICE TO BE 4 INCH-LBS.

REVISIONS				
ZONE	LTR	DESCRIPTION	DATE	APPROVED
-	E	REDRAWN, NO CHANGES CR154738 CF	2-19-90	RJM
-	F	ADDED NOTE #2 CRM29544 RJM	6-13-96	RJM

PART NO. 3BTR6-*-* OPEN ON RISE, GOLD CONTACTS
 3BTD6-*-* CLOSE ON RISE, GOLD CONTACTS
 3BTL6-*-* OPEN ON RISE, SILVER CONTACTS
 3BTF6-*-* CLOSE ON RISE, SILVER CONTACTS

* WHEN CUSTOMERS TEMPERATURE CHARACTERISTICS ARE ESTABLISHED A DASH NO. WILL BE ASSIGNED, THEREBY COMPLETING THE PART NO.
 * IF WIRE LEADS ARE REQUIRED A SECOND DASH NO. WILL BE ASSIGNED TO THE COMPLETED PART NO.

UNLESS OTHERWISE SPECIFIED DIMENSIONS ARE IN INCHES		BY C. FLEURANT	DATE 2-19-96	TEXAS INSTRUMENTS ATLEBORO, MASSACHUSETTS 02703	KLIXON CONTROL PRODUCTS DIVISION
TOLERANCE ON FRACTIONS DECIMALS ANGLES		CH.	ENG.		
MATERIAL		APPROVED Richard J. Walker	DATE 2/26/90	SIZE B	CODE IDENT NO. 82647
				SCALE 4:1	SHEET

SUPERSEDES 3BT-6 REV. D 3-12-64

143238