

CHARACTERISTICS:

CONTACT ARRANGEMENT	S.P.D.T.
ACTUATION FORCE	35 OZ. MAX.
RELEASE FORCE	1 OZ. MIN.
PRETRAVEL	.250 MAX.
MOVEMENT DIFFERENTIAL	.050 MAX.
OVERTRAVEL	.015 MIN.
LIFE AT RATED LOAD	10,000 CYCLES
AMBIENT TEMPERATURE RANGE	-275°F TO +275°F
MAX. ALLOWED APPLIED FORCE TO ACTUATOR	5 LBS.
DIELECTRIC STRENGTH ACROSS:	
OPEN TERMINALS	800 VRMS (5 SEC.)
TERMINALS TO CASE	1000 VRMS (5 SEC.)
MILLIVOLT DROP AT 1 AMP (-1 ONLY)	.040 VOLTS
SEAL	CLASS "5" HERMETIC PER MIL-S-8805

MAX. ALLOWED LEAKAGE	1x10 ⁻⁸ STD. CC HE/SEC.
BACK FILL	DRY NITROGEN

CURRENT CAPACITY

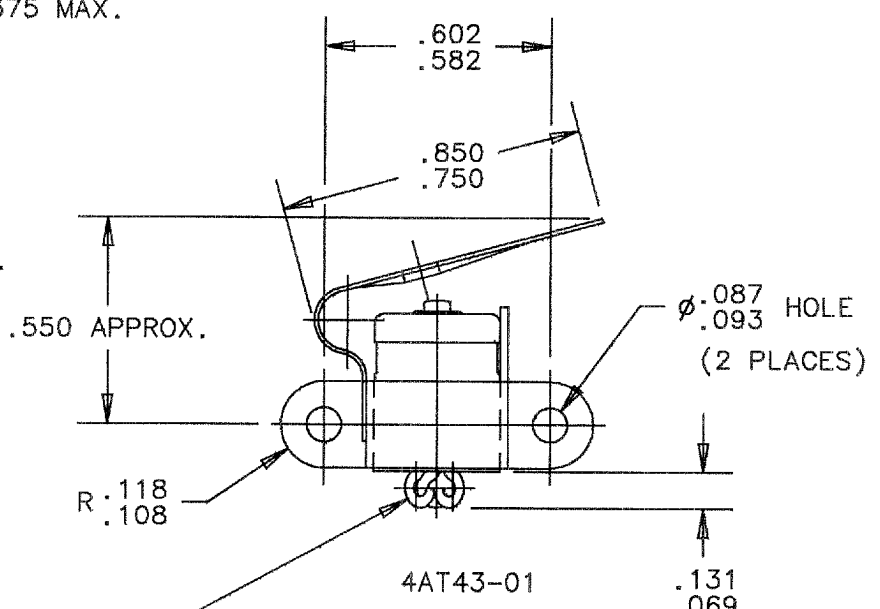
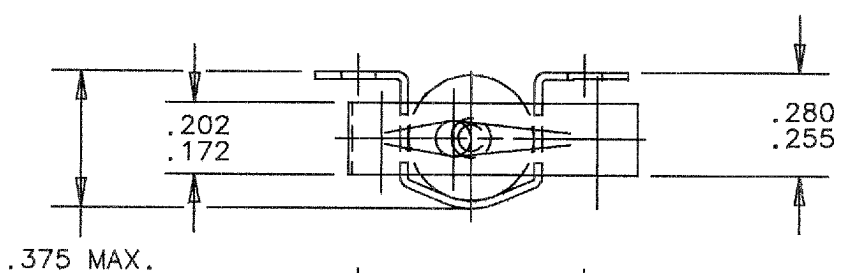
SEA LEVEL AND 70,000 FT. ALTITUDE	
LOAD	28 VOLTS DC
RESISTIVE	3 AMPS
INDUCTIVE	1 AMP L/R .026
LAMP	1 AMP

SHOCK RESISTANCE	WITHOUT CONTACT CHATTER	200 G's
VIBRATION RESISTANCE	*(55-2000 CPS)	65 G's
WEIGHT (4AT43-01)		4 GRAMS

*ACTUATION ARM MUST BE DEPRESSED A MINIMUM OF .025" FROM THE FREE POSITION TO PREVENT LARGE AMPLITUDE RESONANT VIBRATION.

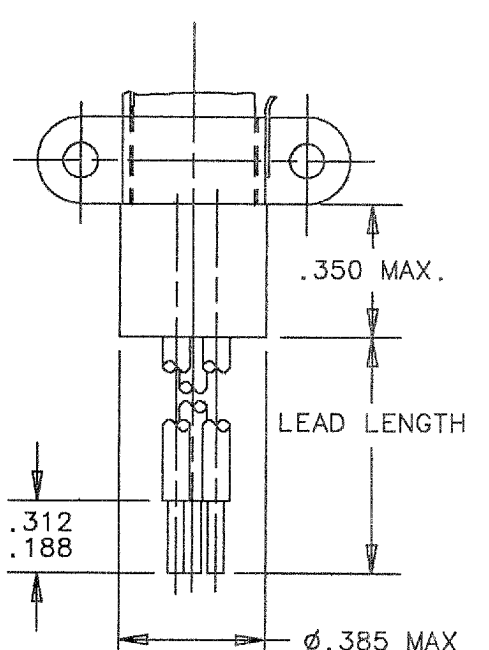
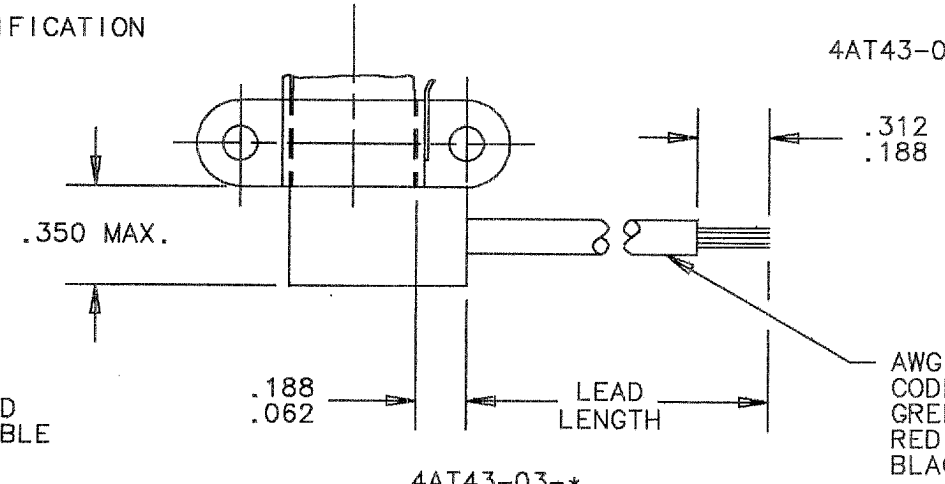
4AT		43-		PART NUMBER EXAMPLE	
BASIC SWITCH	ENVELOPE CONFIGURATION	0 = SPDT	1 = NO LEADS	1	-10
		1 = SPST-NC	2 = LEADS PARALLEL TO AXIS OF SWITCH	1 = 6" MIN.	
		2 = SPST-NO	3 = LEADS AT RIGHT ANGLE TO AXIS OF SWITCH	2 = 12" MIN.	
				3 = 18" MIN.	
				4 = 24" MIN.	
				5 = 30" MIN.	
				6 = 36" MIN.	
				7 = 42" MIN.	
				8 = 48" MIN.	
				9 = 60" MIN.	
				10 = 72" MIN.	

SUPERSEDES DWG. 4AT43 REV.D, DATED 1-2-89



TERMINAL IDENTIFICATION (ON GLASS)
 GREEN - COM.
 PINK - N.O.
 BLACK - N.C.

* SEE LEAD LENGTH TABLE



AWG #20 WIRE LEADS PER MIL-W-22759/9
 CODED:
 GREEN - COM.
 RED - N.O.
 BLACK - N.C.

REVISIONS					
ZONE	LTR	DESCRIPTION	PROJ.# 1005	DATE	APPROVED
B1	E	1; *MIL-W-22759/9* WAS *MIL-W-16878*		4-7-92	PPS
		2; DELETED *TYPE EE*			
CRM08374, CF					

UNLESS OTHERWISE SPECIFIED DIMENSIONS ARE IN INCHES		BY ED JORGE	DATE 1-2-89	TEXAS INSTRUMENTS ATTLEBORO, MASSACHUSETTS 02703	KLIXON CONTROL PRODUCTS DIVISION
TOLERANCES ON FRACTIONS DECIMALS INCHES		CH.			
MATERIAL		ENG. P.D. SAMPSO	4-13-92	TITLE HERMETICALLY SEALED S.P.S.T. OR S.P.D.T. SWITCH LEAF ACTUATED ENVELOPE DRAWING	
APPROVED		SIZE B	CODE IDENT NO. 82647	4AT43	
SHEET 1 OF 1					