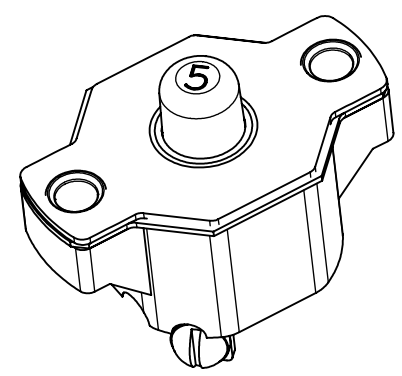
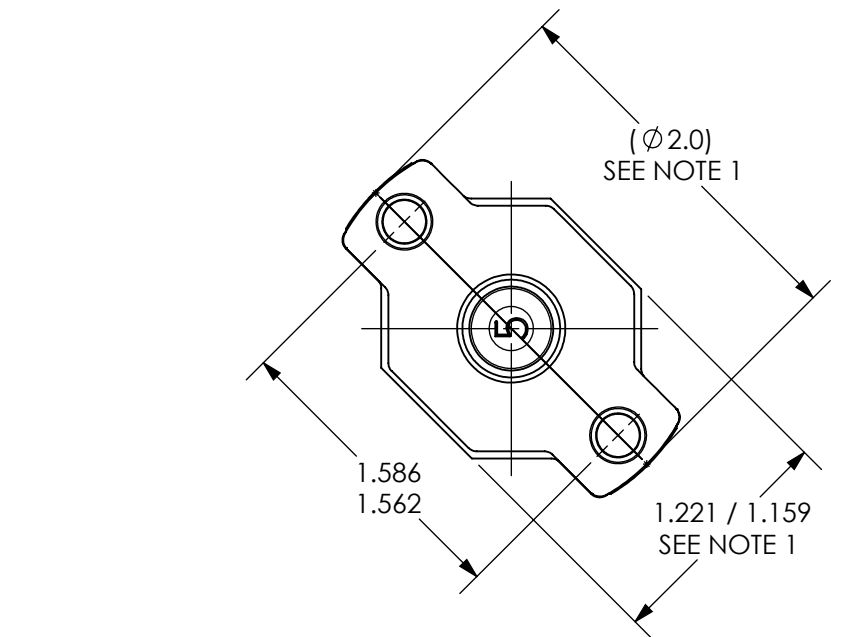


ZONE	REV.	REVISION DESCRIPTION	ECN NO.	DATE
A1	P	DRAWING TITLE WAS "CDM CIRCUIT BREAKER COMMERCIAL WEATHERPROOF MANUAL RESET TYPE ENVELOPE DRAWING. ENDURANCE WAS "COMPLIES WITH SAE J553". DELETED "VOLTAGE DROP: 12.5-40 AMP SAE J553". DIELECTRIC STRENGTH WAS "1500 VAC MINIMUM". INSULATION RESISTANCE WAS "100 MOHM MINIMUM". DELETED "MECHANICAL SHOCK RESISTANCE: 100G". SALT SPRAY WAS "MIL-STD-202 METHOD 204 CONDITION A". "WEIGHT: 48 GRAMS MAX." WAS "WEIGHT: WITH INSERTS: 48 GRAMS MAX."; PAF	ECN0047126	23-JAN-2009
C1				



PERFORMANCE CHARACTERISTICS

VOLTAGE RATING	30 VDC/120 VAC
200% OVERLOAD	
2-10 AMPS	20-150 SECONDS
12.5-40 AMPS	5-55 SECONDS
ULTIMATE TRIP % AT 77° F RATED CURRENT	
MINIMUM	100%
MAXIMUM	135%
INTERRUPT CAPACITY	SAE J553 AND ABYC-E1
ENDURANCE	100 CYCLES AT 400% RATED CURRENT
DIELECTRIC STRENGTH	1500 VAC MINIMUM MIL-STD-202 METHOD 301
INSULATION RESISTANCE	100 MΩ MINIMUM MIL-STD-202 METHOD 302 CONDITION B
VIBRATION RESISTANCE	10G MIL-STD-202 METHOD 204 CONDITION A
SALT SPRAY	96 HOURS PER SAE J1455
IGNITION PROTECTED	SAE J1171
WEATHERPROOF	SAE J553
WEIGHT	48 GRAMS MAX.
UL LISTED	E 36869

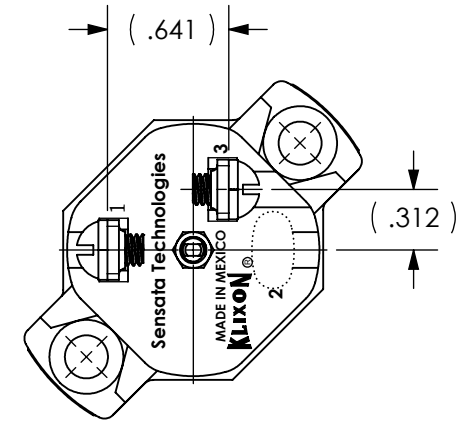
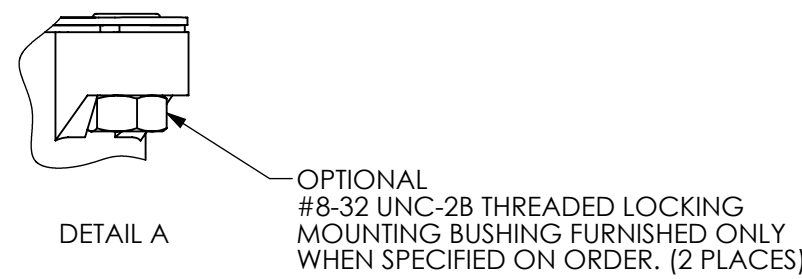
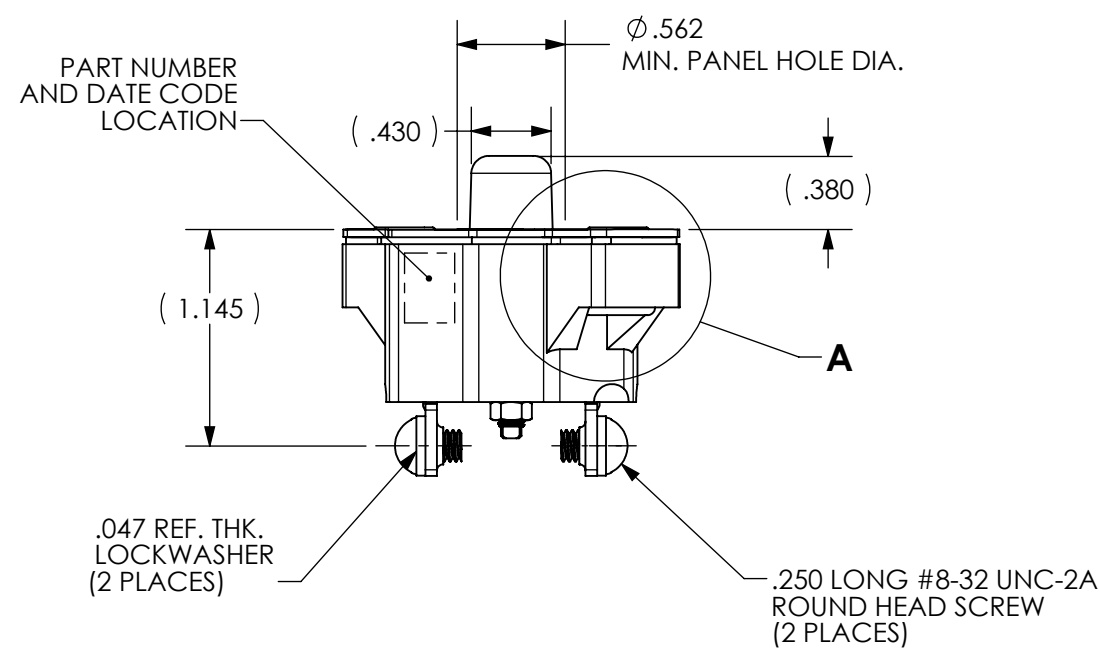


FIG. #1  
BOTTOM VIEW FOR 2 AMP THRU 10 AMP

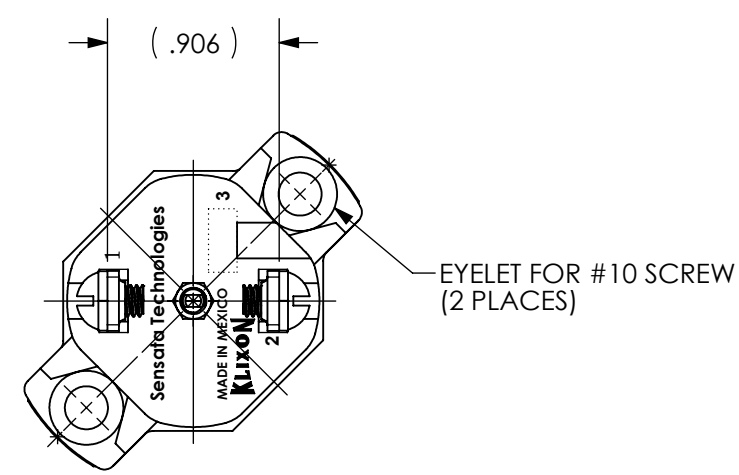


FIG. #2  
BOTTOM VIEW FOR 12½ AMP THRU 40 AMP

NOTES:

1. DIMENSION DOES NOT INCLUDE SEALING GASKET.

PART NO.	AMP RATING	FIGURE NO.	PART NO. WITH THREADED INSERTS
CDM-40	40	2	CDM-40-I
CDM-35	35	2	CDM-35-I
CDM-30	30	2	CDM-30-
CDM-25	25	2	CDM-25-I
CDM-20	20	2	CDM-20-I
CDM-17½	17½	2	CDM-17½-I
CDM-15	15	2	CDM-15-I
CDM-12½	12½	2	CDM-12½-I
CDM-10	10	1	CDM-10-I
CDM-8	8	1	CDM-8-I
CDM-6	6	1	CDM-6-I
CDM-5	5	1	CDM-5-I
CDM-4	4	1	CDM-4-I
CDM-3	3	1	CDM-3-I
CDM-2	2	1	CDM-2-I

FOR REFERENCE ONLY, CHECK LATEST REVISION BEFORE USE. PARTS MADE TO THIS PRINT MUST CONFORM TO E9898 REV. E.		529 PLEASANT STREET P.O. BOX 2964 ATTLEBORO, MA 02703	
DRAWN C.RODZEN DATE 01-JUN-2007 ENGINEER R.GENEREUX DATE 01-JUN-2007 APPROVED P.BERG DATE 01-JUN-2007 APPROVED V.RAMIREZ DATE 01-JUN-2007	SENSATA TECHNOLOGIES PROPRIETARY AND CONFIDENTIAL. NEITHER THIS PRINT NOR THE INFORMATION CONTAINED HEREON IS TO BE USED AGAINST THE INTERESTS OF SENSATA TECHNOLOGIES OR AGAINST THE INTERESTS OF ANY OF ITS AFFILIATED COMPANIES OR WHOLLY OWNED SUBSIDIARIES. UNLESS OTHERWISE SPECIFIED DIMENSIONS ARE IN INCHES TOLERANCES DECIMALS      ANGLES X.XXX ±0.031      X° ±5°	TITLE <b>MANUAL RESET CIRCUIT BREAKER</b>	
DO NOT SCALE DRAWING THIRD ANGLE PROJECTION		SIZE <b>C</b>	DWG NO. <b>CDM</b>
SCALE 1:1    SOLIDWORKS    SHEET 1 OF 1		REV. <b>P</b>	PROJECT: 1